



Recovery Plan

Los Angeles Homeless Services
Authority

Meredith Berkson, Director

Agenda

01 Recovery Plan Overview

02 Updates on Funding

- Annual Allocation Funding Sources
- Total Rapid-Rehousing Recovery Contracts
- CRF Budget Plan

03 Progress Reports

- Recovery Rehousing Contracts
- Project Roomkey Demobilization
- Additional Efforts

Recovery Plan Overview



The COVID-19 Recovery Plan is a comprehensive plan that will rehouse 15,000 of the most vulnerable people experiencing homelessness into housing.

- We are still in a global pandemic. Re-housing our at-risk population helps **break the curve of COVID-19** and can save the lives of thousands of people.
- The **Recovery Plan builds on the success of sheltering over 6,000 people through the coordinated city/county response** to the pandemic by providing sustainable housing solutions for people experiencing homelessness who are the most vulnerable to severe complications due to COVID-19.

The recovery plan will move in two phases:

Phase I

Rapidly move the target population into housing through a massive lease-up effort.

Phase II

Participants with the highest acuity needs will be transferred to supportive housing on a rolling basis as these units become available.

Others will be transferred to a long-term shallow subsidy program to keep them stably housed.

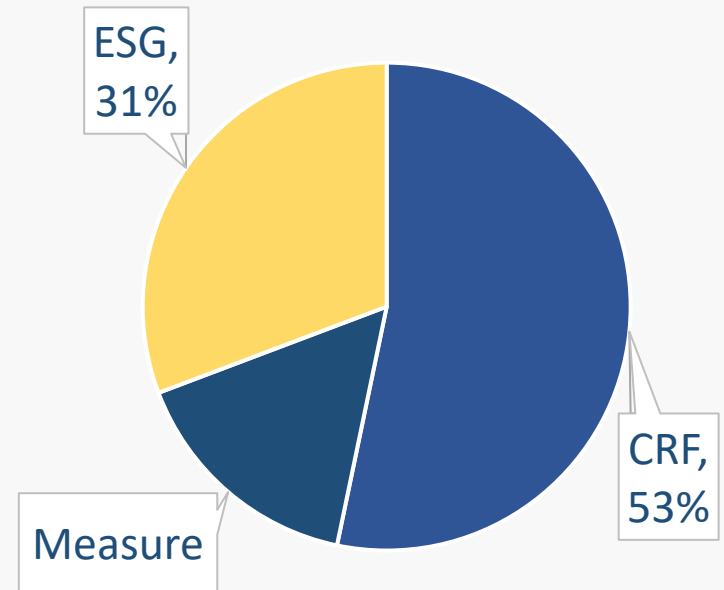
Participants with slightly lower acuity needs will exit their bridge unit through a recovery rehousing subsidy, pairing rental subsidies with enhanced supportive services.

Some participants will go straight to a shallow subsidy.

Updates on Funding

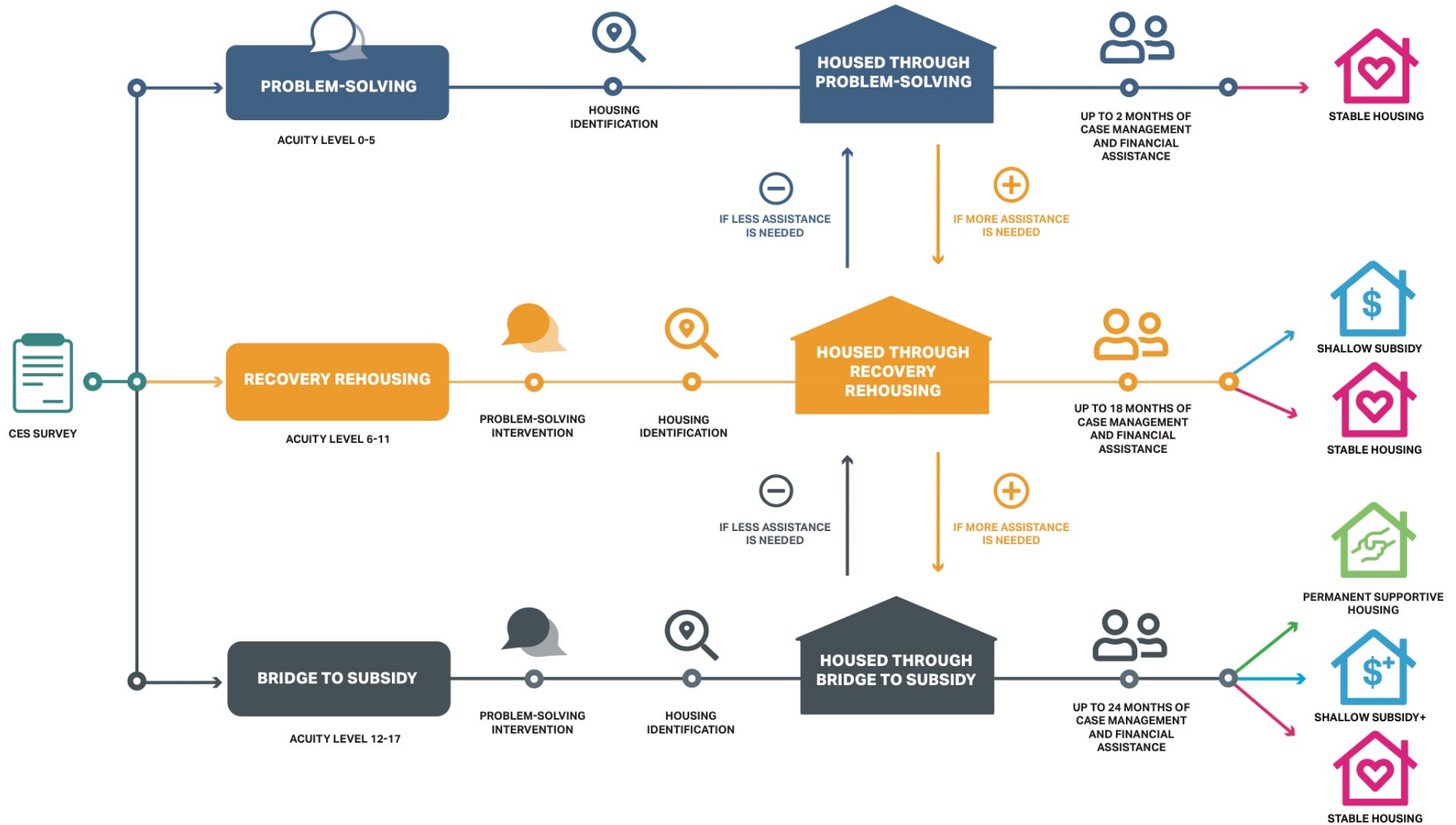
FY 2020-2021 Allocation Funding Sources

Funding Source	Annual Amount
County CRF	\$50,000,000
Measure H	\$15,000,000
County ESG-CV	\$28,862,757
Total	\$93,862,757



*LA City has committed \$30M of their City ESG-CV, but this is intended to serve COVID vulnerable and other populations, including people living near freeways and underpasses.

COVID RECOVERY REHOUSING SERVICE PATHWAYS





CRF Budget Plan - Summary

Program	County CRF
City Located Sites (18 PRK sites)	\$ 21,937,676
County Located Sites (19 PRK sites)	\$ 21,361,048
Problem Solving Assistance Funds	\$ 587,494
Housing Navigation/Regional Coordination	\$ 1,113,782
LAHSA Admin	\$ 5,000,000
Total	\$ 50,000,000

Progress Reports

Recovery Rehousing Contracts

01

Coronavirus Aid, Relief, and Economic Security Act
Coronavirus Relief Fund
Agreement between LAHSA and the County was executed on August 14, 2020.

02

LAHSA has allocated \$43,298,724 of County CRF to provide Recovery Rehousing to all Project Roomkey Sites; 20 PRK contracts have been approved by LAHSA Commission and are currently in process of being executed for 37 PRK sites. For sites in the County ESG service area, funding will be added upon receipt for the remainder of the fiscal year. Allocations were based on the acuties and recommended service pathways of the current residents.

Project Roomkey Demobilization

01

Intensive exit planning for every individual

- Starting **7 weeks prior to a site coming offline**, LAHSA is leading intensive exit planning for each individual PRK site through at **minimum twice-per-week meetings** involving the site operator, several LAHSA team members, Adults CES Lead Agencies, and system partners including DMH and DHS.
- These meetings include client-by-client case conferencing to finalize exit pathways, track lease-up progress, mitigate barriers to permanent housing access, and facilitate referrals to additional resources in service of the rehousing work.

Project Roomkey Demobilization

02

In August, the first PRK site came offline

Despite a short timeframe and not having Recovery Rehousing contracts in place, **67 out of 68 residents were connected to a permanent housing resource**, and/or were transferred to another Interim Housing option such as another PRK site.

03

3 sites came offline in September and 4 are coming offline in October

All residents have been offered a permanent housing resource in the process, and we are on track to ensuring that no one exits to the streets, unless they choose to.

Demobilization Data To Date

- 81% exits to Temporary or Permanent housing (**278** out of 343)—vast majority (77%) exited to temporary destinations as Recovery Re-Housing programs ramp up
- 14% exits to Unknown or Other destinations (**47** out of 343)
- 3% exits to Unsheltered destinations (**10** out of 343)
- 2% Deceased or exits to Institutions (**8** out of 343)

All participants offered a permanent housing resource:
90%- 95% linked to a subsidy by their site's take-down date,
regardless of exit destination

Additional Efforts LAHSA is Undertaking

\$1.9M

of County CRF has been allocated to PATH's Lease Up program to immediately lease up units with holding fees to make them available for the Recovery Plan.

37

temporary Document Specialists are in the process of being hired to collocate at each PRK site to assist clients in obtaining their IDs and Social Security Cards, connect people to their case managers, and assist with other housing navigation activities.

Additional Efforts LAHSA is Undertaking

Housing Navigators

Providing Single Adult CES leads funding for additional Housing Navigators, who will serve the COVID High Risk individuals in their SPAs.

Regional Coordination

Working with Single Adult CES Regional Coordinators to orchestrate Recovery Rehousing and PRK Demobilization activities.